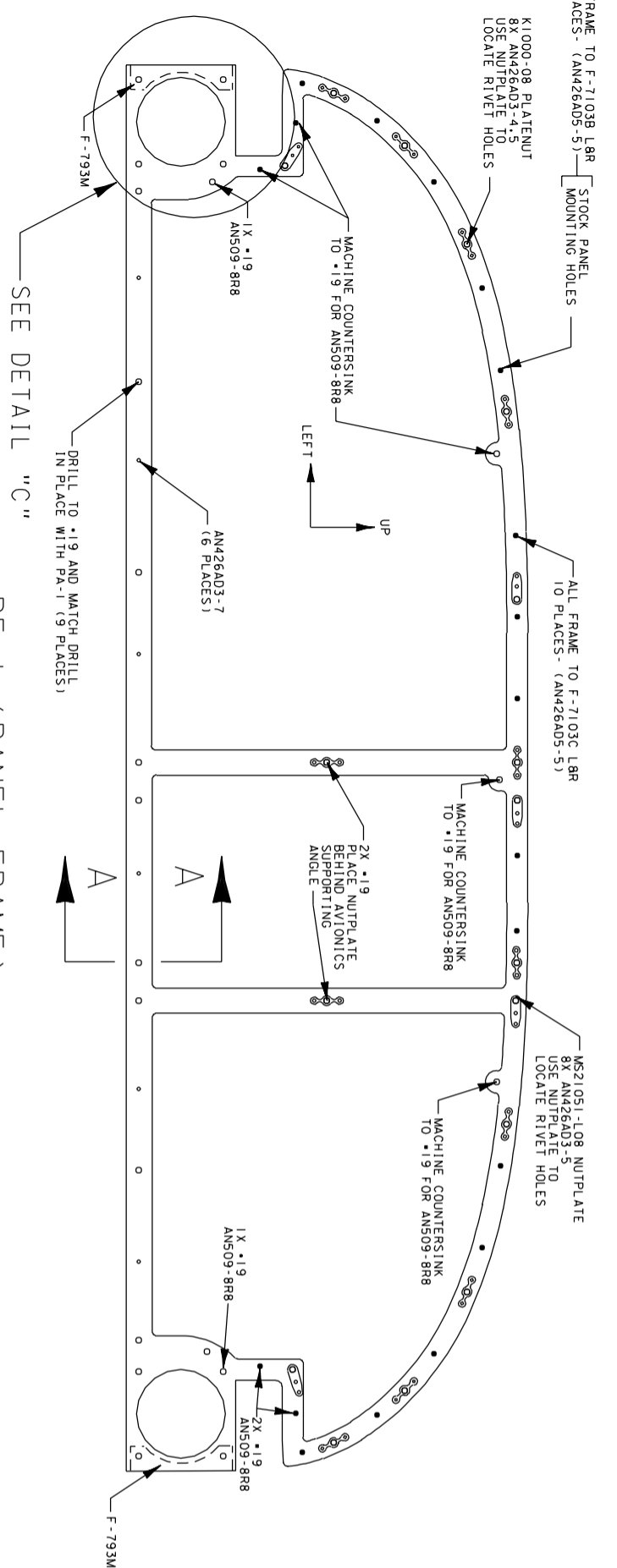
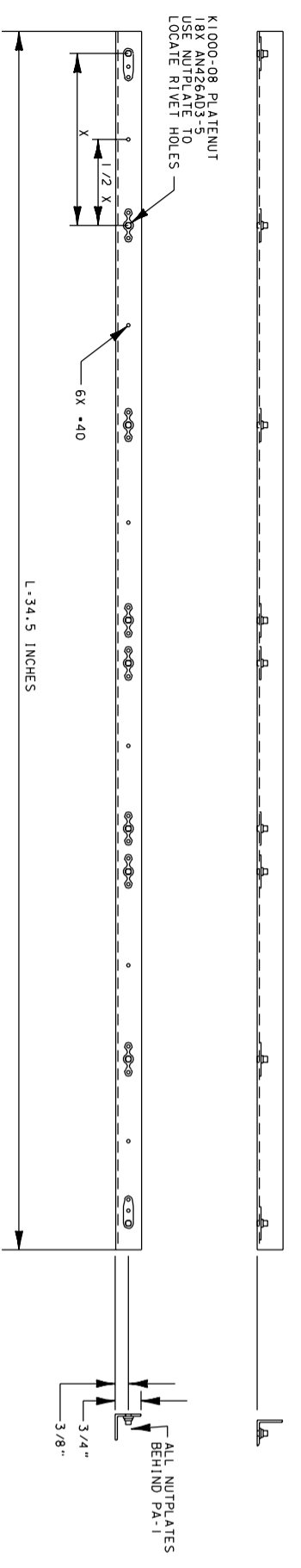


ALL FRAME TO F-7103B LBR  
TO PLACES - (AN426AD5-5) -

STOCK PANEL  
MOUNTING HOLES

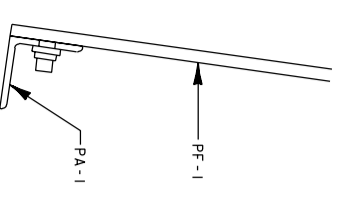


PF-1 (PANEL FRAME)

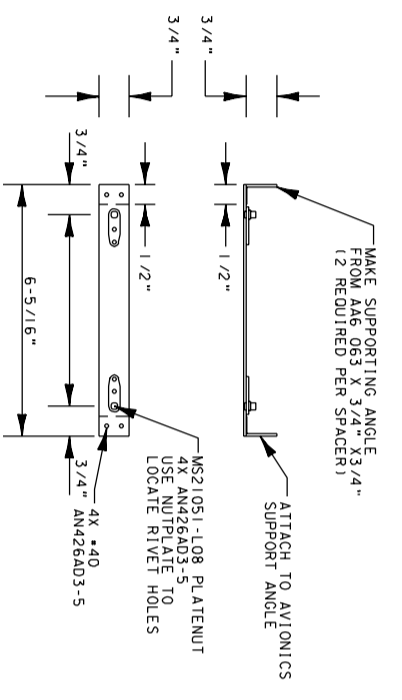


PA-1 (REINFORCEMENT ANGLE)

MAKE FROM AAG-063 X 3/4 X 3/4  
(ONE REQUIRED)

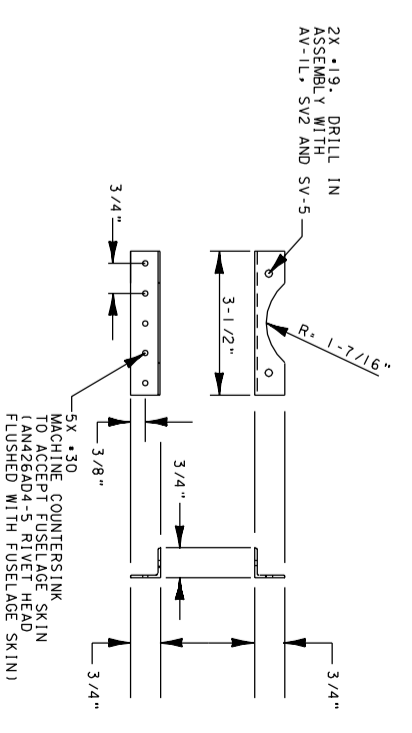


VIEW A-A



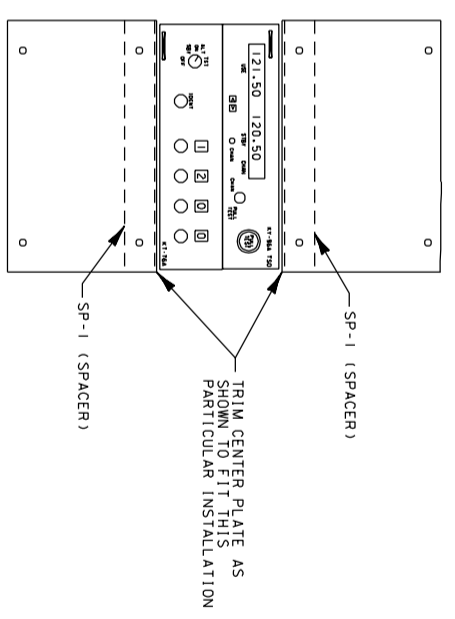
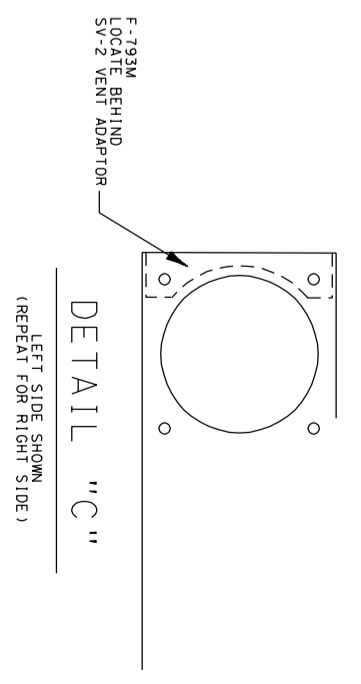
SP-1 (SPACER)

MAKE FROM DISCARDED MATERIAL OF CENTER PLATE  
TO TO 2 REQUIRED - SEE SAMPLE INSTALLATION



F-793M (ANGLE)

MAKE FROM AAG 063 X 3/4 X 3/4  
(2 REQUIRED)



CENTER PLATE  
SAMPLE INSTALLATION

<b>MODULAR PANEL</b>	DRAWN BY:	F. LEFLER
	DATE:	MAY 1, 2005
<b>PANEL INSTALLATION FOR RV-7/9 SLIDER XL</b>		SHEET NO
		1