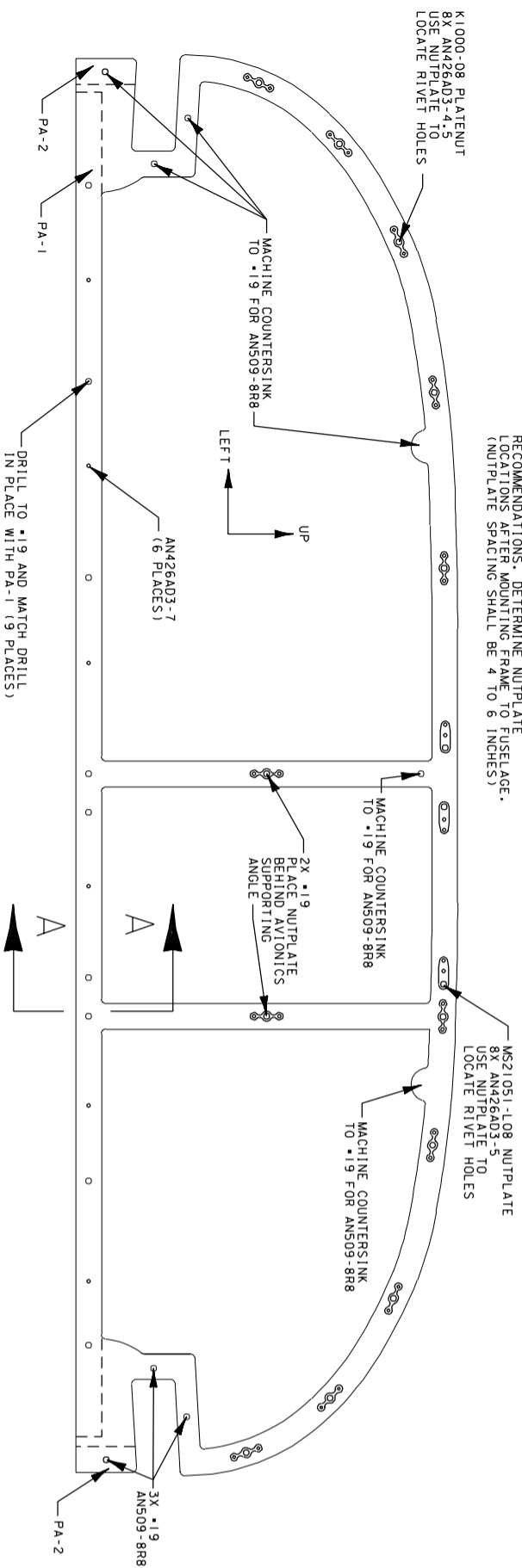
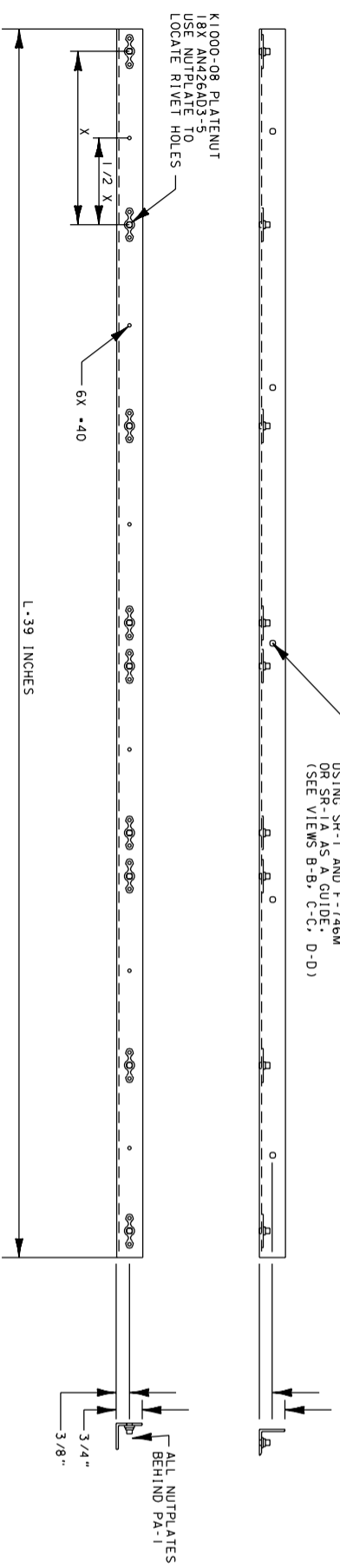


NUTPLATE LOCATIONS SHOWN ARE ONLY RECOMMENDATIONS. DETERMINE NUTPLATE LOCATIONS AFTER MOUNTING FRAME TO FUSELAGE. (NUTPLATE SPACING SHALL BE 4 TO 6 INCHES)



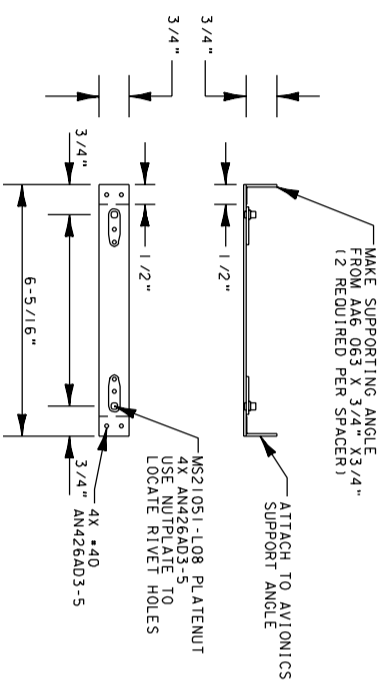
PF-1 (PANEL FRAME)

IF INSTALLING SUB-PANEL
 OPTION BACKDRILL TO $\bullet 19$
 USING SR-1 AND F-746M
 OR SR-1A AS A GUIDE.
 (SEE VIEWS B-B, C-C, D-D)



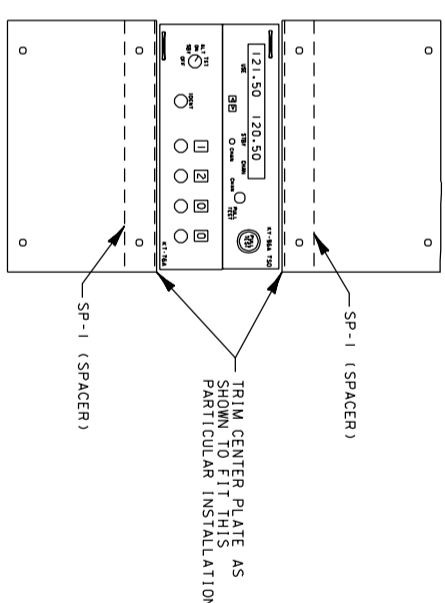
PA-1 (REINFORCEMENT ANGLE)

MAKE FROM AA6-063 X3/4 X3/4
 (ONE REQUIRED)

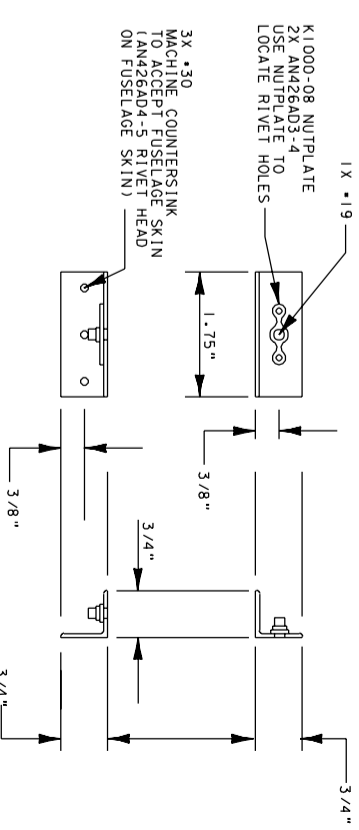


SP-1 (SPACER)

MAKE FROM DISCARDED MATERIAL OF CENTER PLATE
 (O TO Z REQUIRED - SEE SAMPLE INSTALLATION)



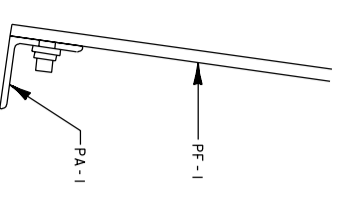
CENTER PLATE
 SAMPLE INSTALLATION



PA-2 (ANGLE)

MAKE FROM AA6 063 X 3/4" X 3/4"
 (2 REQUIRED)

VIEW A-A



MODULAR PANEL

DRAWN BY: F. LEFLER
 DATE: JULY 1, 2005

PANEL INSTALLATION
 FOR RV-6 SLIDERS

SHEET NO
 1