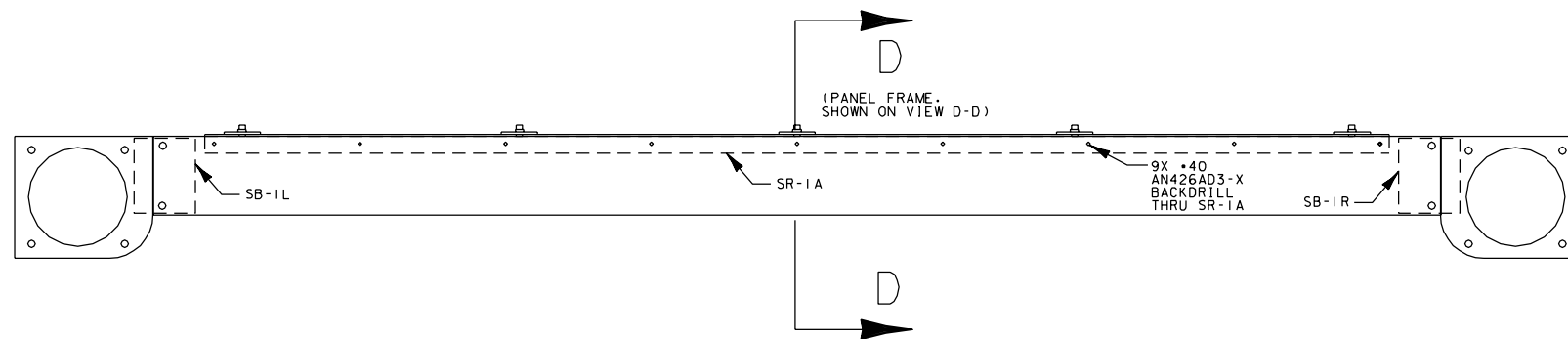
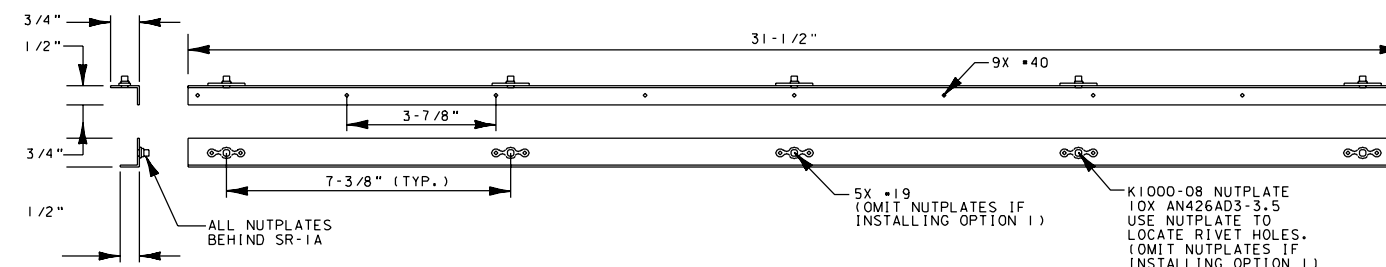


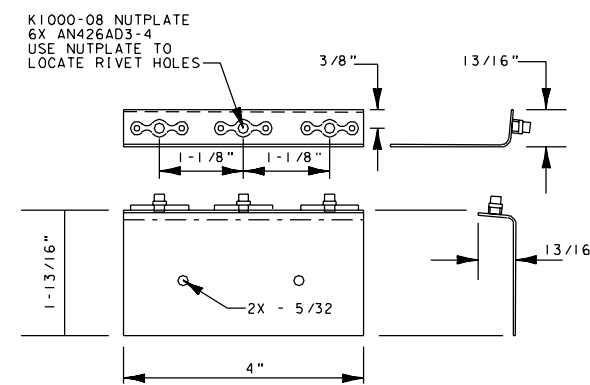
OPTION 1
(SUB-PANEL RESTING ANGLE PERPENDICULAR TO CABIN FLOOR)
PS-1 (SUB-PANEL)



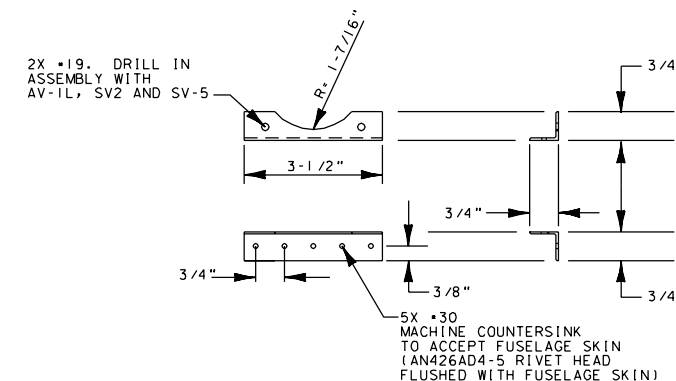
OPTION 2
(SUB-PANEL RESTING ANGLE SAME AS PANEL FRAME)
PS-1 (SUB-PANEL)



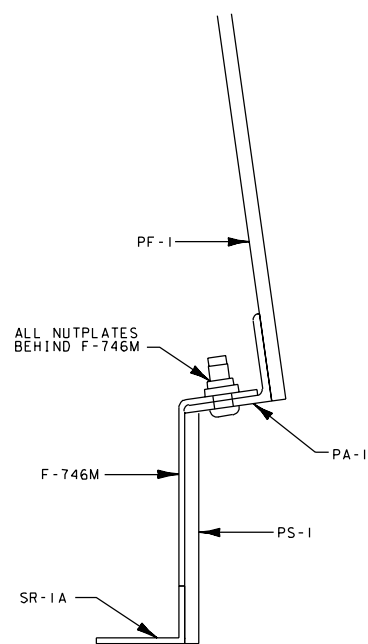
SR-1A (STIFFENER)
MAKE FROM AA 050 X 1/2" X 3/4"
(1 REQUIRED)



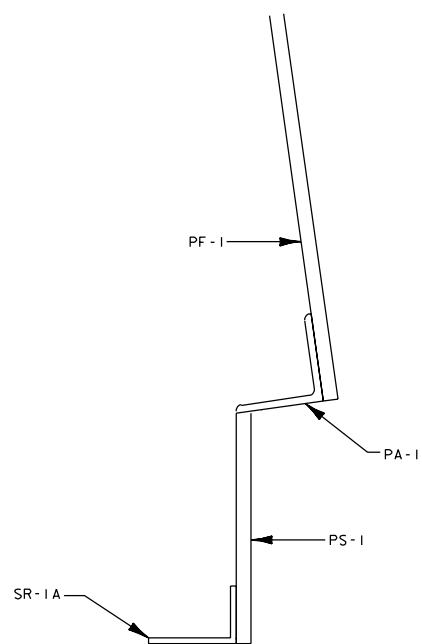
F-746M (BRACKET)
MAKE FROM VAN'S F-746 BRACKET
(ONE REQUIRED)



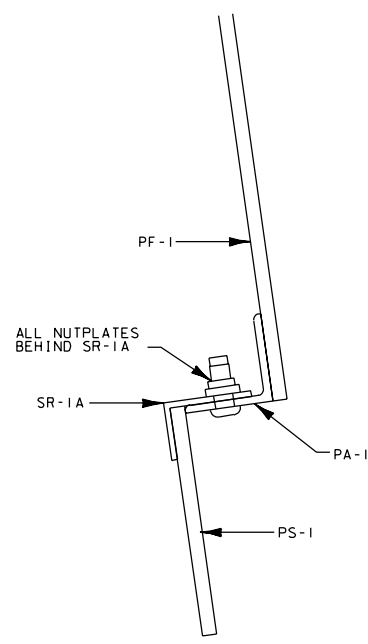
F-793M (ANGLE)
MAKE FROM AA6 063 X 3/4" X 3/4"
(2 REQUIRED)



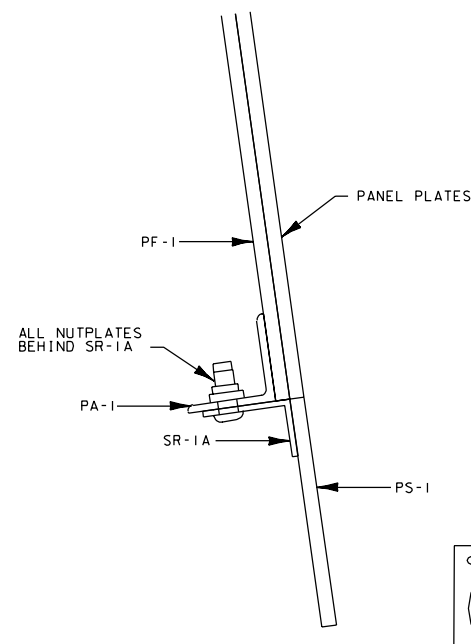
VIEW B-B



VIEW C-C

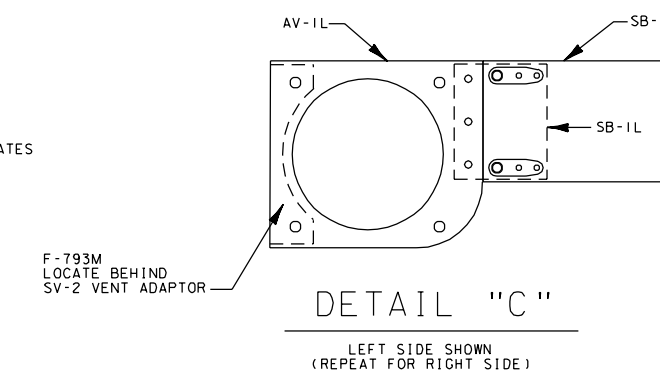


OPTION A
SUB-PANEL RECESSED FROM PLATES



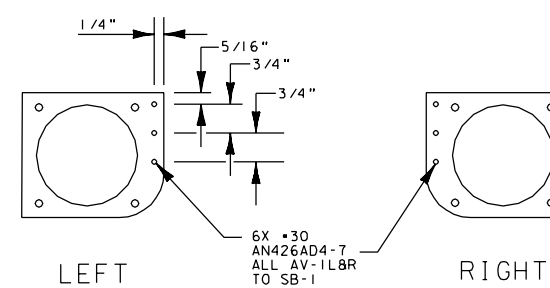
OPTION B
SUB-PANEL FLUSHED WITH PANEL PLATES

VIEW D-D

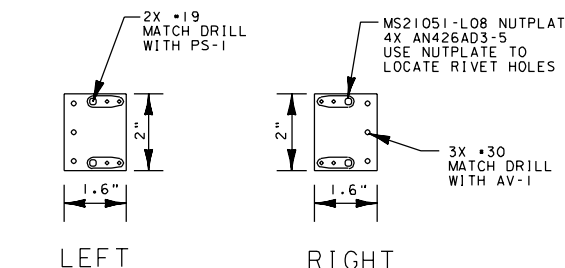


DETAIL "C"

LEFT SIDE SHOWN
(REPEAT FOR RIGHT SIDE)



AV-1 (AIR VENTS)



SB-1
(SUB-PANEL BRACKET)

MAKE FROM AS125 X 2"
(1 LEFT AND 1 RIGHT REQUIRED)

MODULAR PANEL	DRAWN BY:	F. LEFLER
	DATE:	SEPT 2, 2002
AIR-VENTS AND SUB-PANEL INSTALLATION		SHEET NO
		2